

# 6 YEARS OF GOVERNMENT: 2018-2024

## WHAT DOES THE DATA SAY?

Categories		No. of indicators
	Economics and Finance	45
	Society and Development	30
	Politics and Government	19
	Security, Justice and Human Rights	10
	Total	104

This report presents some quantitative indicators regarding the administration of President Andrés Manuel López Obrador. Its purpose is not to be exhaustive nor to show any assessment or conclusion, but simply to provide information that may be of interest.

# 1

## ECONOMY AND FINANCE

### Occupation, employment and wages

Indicator	Base data	Last data	Variation
Unemployment rate (INEGI)	<b>3.6%</b> (Dec 2018)	<b>2.7%</b> (Jul 2024)	<b>-0.9 pp</b>
Economically active population active (INEGI)	<b>55,519,394</b> (4T 2018)	<b>60,953,610</b> (2T 2024)	<b>9.8%</b>
Jobs IMMS (IMSS) affiliates	<b>20,079,365</b> (Dec 2018)	<b>22,331,788</b> (Jul 2024)	<b>11.2%</b>
Minimum wage (constant pesos Q2 Jul 2018) (CONASAMI)	<b>85.77</b> (dic 2018)	<b>190.29</b> (jul 2024)	<b>121.9%</b>
Salary mass (constant mdp)(IMSS)	<b>9,296</b> (Dec 2018)	<b>13,147</b> (Jul 2024)	<b>41.4%</b>
Productivity index labor <sup>1</sup> (BANXICO)	<b>101.95</b> (4T 2018)	<b>97.39</b> (2T 2024)	<b>-4.6 pp</b>
Unit cost index of the labor <sup>2</sup> (BANXICO)	<b>97.29</b> (4T 2018)	<b>119.77</b> (2T 2024)	<b>22.5 pp</b>
Population in situation of working poverty (CONEVAL)	<b>39.8%</b> (4T 2018)	<b>35.0%</b> (2T 2024)	<b>-4.8 pp</b>

### Competitiveness

Indicator	Base data	Latest data	Variation
Ranking of the <i>International Institute for Management Development</i> (IMD) (63 countries)	<b>51</b> (2018)	<b>56</b> (2024)	<b>-5</b>

### Economic growth

Indicator	Base data	Latest data	Variation
Average growth per six-year period (INEGI and BANXICO)	<b>1.9%</b> (2013-2018)	<b>1.0%</b> (2019-2024) <sup>3</sup>	<b>-0.9 pp</b>

<sup>1</sup> Base 100 = 4Q 2019.

<sup>2</sup> Base 100 = 4Q 2019.

<sup>3</sup> For 2024, the latest Banxico survey was taken into consideration.

## Mexican Stock Exchange Index of Prices and Quotations

Indicator	Base data	Latest data	Variation
S&P / BMV Index (IPC) (BMV)	<b>41,640.27</b> (31 Dec 2018)	<b>51,985.87</b> (30 Aug 2024)	<b>24.8%</b>

## Gross Domestic Product (GDP)

Indicator	Base data	Latest data	Variation
Real GDP size (bpd, seasonally adjusted figures) (INEGI)	<b>24.19</b> (4T 2018)	<b>25.27</b> (2T 2024)	<b>4.5%</b>
GDP per capita (2018 pesos) (INEGI)	<b>192,905</b> (4T 2018)	<b>191,829</b> (2T 2024)	<b>-0.56%</b>

## Inflation

Indicator	Base data	Latest data	Variation
Annual rate (INEGI)	<b>4.83</b> (Dec 2018)	<b>4.99</b> (Aug 2024)	<b>0.16 pp</b>
Underlying annual rate (INEGI)	<b>3.68</b> (Dec 2018)	<b>4.00</b> (Aug 2024)	<b>0.32 pp</b>

## Investment

Indicator	Base data	Latest data	Variation
Public (million pesos to pesos 2018) (INEGI)	<b>699</b> (4T 2018)	<b>683</b> (2T 2024)	<b>-2.3%</b>
Private (million pesos to pesos 2018) (INEGI)	<b>4,758</b> (4T 2018)	<b>5,749</b> (2T 2024)	<b>20.8%</b>
Foreign direct (mdd) (SECRETARIAT OF THE ECONOMY)	<b>23,645</b> (Jan-Jun 2018)	<b>31,096</b> (Jan-Jun 2024, preliminary)	<b>31.5%</b>
Foreign direct investment (mmdd, first 22 quarters) (SECRETARIAT OF ECONOMY)	<b>203.50</b> (2012-2018)	<b>199.99</b> (2018-2024)	<b>-1.7%</b>

## Regional economic activity

Indicator	Base data	Last data	Variation
Quarterly indicator (Base index, 1Q 2020=100) (BANXICO)	NORTH		
	<b>102.36</b> (4T 2018)	<b>105.81</b> (2T 2024)	<b>3.45 pp</b>
	NORTH CENTER		
	<b>101.87</b> (4T 2018)	<b>105.39</b> (2T 2024)	<b>3.52 pp</b>
	CENTER		
	<b>102.53</b> (4T 2018)	<b>105.98</b> (2T 2024)	<b>3.45 pp</b>
	SUR		
	<b>98.59</b> (4T 2018)	<b>109.62</b> (2T 2024)	<b>11.03 pp</b>

## Reference rate

Indicator	Base data	Latest data	Variation
Target rate (BANXICO)	<b>8.25</b> (Dec 2018)	<b>10.75</b> (Sep 2024)	<b>2.5 pp</b>

## Country Risk

Indicator	Base data	Last data	Variation
Sovereign debt credit rating	Moody's		
	<b>A3</b> (Dec 2018)	<b>Baa2</b> (Aug 2024)	<b>Downward</b>
	S&P Global Ratings		
	<b>BBB+</b> (Dec 2018)	<b>BBB</b> (Aug 2024)	<b>Downward</b>
	Fitch Ratings		
	<b>BBB+</b> (Dec 2018)	<b>BBB-</b> (Aug 2024)	<b>Downward</b>

## Reservations

Indicator	Base data	Latest data	Variation
Banxico's reserves (mdd) (BANXICO)	<b>173,329</b> (Dec 2018)	<b>226,109</b> (Sep 2024)	<b>30.4%</b>

## Exchange rate

Indicator	Base data	Latest data	Variation
Mexican pesos per U.S. dollar (BANXICO)	<b>19.7</b> (31 Dec 2018)	<b>19.8</b> (30 Aug 2024)	<b>0.5%</b>

## Debt

Indicator	Base data	Latest data	Variation
SHRFSP4 (% of annual GDP) (SHCP)	<b>43.6%</b> (2018)	<b>50.2%</b> (2024 ) <sup>5</sup>	<b>6.6 pp</b>
Net indebtedness (constant bdp of 2024) (SHCP)	<b>13.99</b> (2018)	<b>16.03</b> (2024)	<b>14.6%</b>

## Collections

Indicator	Base data	Latest data	Variation
Tax revenues (% of annual GDP) (SHCP)	<b>12.7%</b> (2018)	<b>14.6%</b> (2024 ) <sup>5</sup>	<b>1.9 pp</b>

## Collection and budget priorities<sup>6</sup>

Indicator	Base data	Last data	Variation
	TOTALS		
	<b>3,371</b> (2T 2018)	<b>3,819</b> (2T 2024)	<b>13.3% actual</b>
	PETROLEANS		
	<b>641</b> (2T 2018)	<b>547</b> (2T 2024)	<b>-14.7% real</b>
	TAXATION		
Public sector budgetary revenues (million pesos) (SHCP)	<b>2,099</b> (2T 2018)	<b>2,528</b> (2T 2024)	<b>20.4% actual</b>
	ISR		
	<b>1,181</b> (2T 2018)	<b>1,435</b> (2T 2024)	<b>21.5% actual</b>
	VAT		
	<b>621</b> (2T 2018)	<b>671</b> (2T 2024)	<b>8.1% actual</b>
	IEPS		
	<b>223</b> (2T 2018)	<b>312</b> (2T 2024)	<b>39.9% actual</b>

<sup>4</sup> Historical Balance of Public Sector Borrowing Requirements.

<sup>5</sup> Estimated by SHCP.

<sup>6</sup> Q2 2018 vs Q2 2024 data at constant prices.

Indicator	Base data	Latest data	Variation
Total public sector budgetary expenditure (million pesos) (SHCP) <sup>7</sup>	<b>3,758</b> (2T 2018)	<b>4,563</b> (2T 2024)	<b>21.4% actual</b>
Contributions (million pesos) (SHCP)	<b>474</b> (2T 2018)	<b>489</b> (2T 2024)	<b>3.2% actual</b>
Participations (million pesos) (SHCP)	<b>588</b> (2T 2018)	<b>695</b> (2T 2024)	<b>18.2% actual</b>

## Pemex production

Indicator	Base data	Latest data	Variation
Crude oil (thousands of barrels per day) (CNH)	<b>1,676</b> (Dec 2018)	<b>1,470</b> (Jul 2024)	<b>-12.3%</b>
Natural gas (million cubic feet per day) (CNH)	<b>3,521</b> (Dec 2018)	<b>3,504</b> (Jul 2024)	<b>-0.5%</b>
Petroleum products (thousands of barrels per day) (PEMEX)	<b>522</b> (Dec 2018)	<b>982</b> (Jul 2024)	<b>88.1%</b>

## Gasoline prices

Indicator	Base data	Latest data	Variation
Regular gasoline (current pesos) (CRE)	<b>19.29</b> (1 Dec 2018)	<b>24.09</b> (31 Aug 2024)	<b>24.9%</b>

**Note:** Prepared by the authors with data from the sources cited in each indicator.

<sup>7</sup> Total net expenditure (sum of programmable and non-programmable expenditure).

# 2 SOCIETY AND DEVELOPMENT

## Social Programs

Indicator	Base data	Latest data	Variation
Social protection spending (constant billion pesos)(SHCP)	<b>597</b> (Jan - Jun 2018)	<b>963</b> (Jan - Jun 2024)	<b>61.3%</b>
Annual budget of the Pension for the Welfare of the Elderly program (constant pesos)(SHCP)	<b>53,190</b> (2018)	<b>465,049</b> (2024)	<b>774.3%</b>
Annual budget of the Youth program Building the Future (constant mdp)(SHCP)	<b>51,825</b> (2019)	<b>24,205</b> (2024)	<b>-53.3%</b>

## Social deprivation indicators

Indicator	Base data	Latest data	Variation
Population lacking access to social security (CONEVAL)	<b>53.5%</b> (2018)	<b>50.2%</b> (2022)	<b>-3.3 pp</b>
Population deprived by housing quality and space (CONEVAL)	<b>11.0%</b> (2018)	<b>9.1%</b> (2022)	<b>-1.9 pp</b>
Population lacking access to basic services in housing (CONEVAL)	<b>19.6%</b> (2018)	<b>17.8%</b> (2022)	<b>-1.8 pp</b>
Population with deficiencies due to lack of access to nutritious and quality food (CONEVAL)	<b>22.2%</b> (2018)	<b>18.2%</b> (2022)	<b>-4.0 pp</b>

## Multidimensional poverty

Indicator	Base data	Latest data	Variation
Population living in poverty (CONEVAL)	<b>41.9%</b> (2018)	<b>36.3%</b> (2022)	<b>-5.6 pp</b>
Population in situation of moderate poverty (CONEVAL)	<b>34.9%</b> (2018)	<b>29.3%</b> (2022)	<b>-5.6 pp</b>
Population living in extreme poverty (CONEVAL)	<b>7.0%</b> (2018)	<b>7.1%</b> (2022)	<b>0.1 pp</b>
Population in situation of vulnerability due to social deprivation (CONEVAL)	<b>26.4%</b> (2018)	<b>29.4%</b> (2022)	<b>3.0 pp</b>
Population in situation of vulnerability by income (CONEVAL)	<b>8.0%</b> (2018)	<b>7.2%</b> (2022)	<b>-0.8 pp</b>
Non-poor and non-vulnerable population (CONEVAL)	<b>23.7%</b> (2018)	<b>27.1%</b> (2022)	<b>3.4 pp</b>

## Human Development Index (HDI)

Indicator	Base data	Latest data	Variation
Human Development Index (score 0 - 1) (UNDP)	<b>0.779</b> (2018)	<b>0.781</b> (2022)	<b>0.002</b>

## Education

Indicator	Base data	Latest data	Variation
Population with educational backwardness (CONEVAL)	<b>19.0%</b> (2018)	<b>19.4%</b> (2022)	<b>0.4 pp</b>
Expected schooling (years) (UNDP)	<b>14.9</b> (2018)	<b>14.5</b> (2022)	<b>-0.4</b>
Average schooling (years) (UNDP)	<b>8.9</b> (2018)	<b>9.2</b> (2022)	<b>0.3</b>
Illiterate population 15 years of age and older (INEGI)	<b>6.9%</b> (2010)	<b>4.7%</b> (2020)	<b>-2.2 pp</b>
Population between 6 and 14 years of age not attending school (INEGI)	<b>4.8%</b> (2010)	<b>6.0%</b> (2020)	<b>1.2 pp</b>



Indicator	Base data	Latest data	Variation
Population between 15 and 24 years old not attending school (INEGI)	<b>59.6%</b> (2010)	<b>54.7%</b> (2020)	<b>-4.9 pp</b>

## Health

Indicator	Base data	Latest data	Variation
Life expectancy at birth (years) (UNDP)	<b>74.0</b> (2018)	<b>74.8</b> (2022)	<b>0.8</b>
Population lacking access to health services (CONEVAL)	<b>16.2%</b> (2018)	<b>39.1%</b> (2022)	<b>22.9 pp</b>
Population affiliated to health services (INEGI)	<b>82.7%</b> (2017)	<b>73.5%</b> (2020)	<b>-9.2 pp</b>
Health care spending (dollars per capita) (OECD)	<b>1,122.18</b> (2018)	<b>1,181.04</b> (2022)	<b>5.2%</b>
Public expenditure on health (% of GDP) (SHCP)	<b>2.3%</b> (2018)	<b>2.5%</b> (2023)	<b>0.2 pp</b>
Children under one year of age immunized (OECD)	<b>88%</b> (2018)	<b>84.7%</b> (2023)	<b>-3.3 pp</b>
Number of physicians per 100,000 inhabitants (OECD)	<b>2.44</b> (2018)	<b>2.51</b> (2021)	<b>2.9%</b>

## Degree of social cohesion<sup>8</sup>

Indicator	Base data	Latest data	Variation
28 states (CONEVAL)	<b>High social cohesion</b> (2016)	<b>High social cohesion</b> (2022)	<b>No change</b>
Guerrero and Oaxaca (CONEVAL)	<b>Low social cohesion</b> (2016)	<b>Low social cohesion</b> (2022)	<b>No change</b>
Veracruz and Yucatán (CONEVAL)	<b>Low social cohesion</b> (2016)	<b>High social cohesion</b> (2022)	<b>Increased</b>

**Note:** Prepared by the authors with data from the sources cited in each indicator.

<sup>8</sup> To measure the degree of social cohesion, Coneval uses four indicators (i) Gini Coefficient, (ii) income ratio, (iii) degree of social polarization and (iv) social network perception index.

# 3 POLITICS AND GOVERNMENT

## Quality of democracy

Indicator	Base data	Last data	Variation
Democracy Index (score 0 - 10) ( <i>The Economist</i> )	<b>6.19</b> (2018)	<b>5.14</b> (2023)	<b>-1.05</b>
Global freedom index (score 0 - 100) ( <i>FREEDOM HOUSE</i> )	<b>62</b> (2018)	<b>60</b> (2024)	<b>-2.0</b>
Deliberative Democracy Index (score 0 - 1) (V-DEM)	<b>0.47</b> (2018)	<b>0.30</b> (2024)	<b>-0.17</b>
Ranking of deliberative democracy (179 countries) (V-DEM)	<b>71</b> (2018)	<b>101</b> (2024)	<b>-30.0</b>
Index of Democratic Development (national average, score 0 - 10) (IDD - MEX)	<b>5.010</b> (2018)	<b>5.594</b> (2023)	<b>0.58</b>

## Evaluation of President López Obrador's performance

Indicator	Base data	Latest data	Variation
Approves your work (EL FINANCIERO)	<b>77%</b> (Dec 2018)	<b>65%</b> (Aug 2024)	<b>-12 pp</b>
Disapproves of your work (EL FINANCIERO)	<b>19%</b> (Dec 2018)	<b>33%</b> (Aug 2024)	<b>14 pp</b>
Approves your work (ORACULUS)	<b>76%</b> (Dec 2018)	<b>71%</b> (Aug 2024)	<b>-5 pp</b>
Disapproves of your work (ORACULUS)	<b>14%</b> (Dec 2018)	<b>25%</b> (Aug 2024)	<b>11 pp</b>

## Reconfiguration of political power at the territorial level

Indicator	Base data	Latest data	Variation
Number of governorships of President López Obrador's party (Morena and allies) (INE)	<b>5</b> (Dec 2018)	<b>24</b> (Jun 2024 ) <sup>9</sup>	<b>19</b>

<sup>9</sup> Electoral results of the 2023-2024 process, with data from Local Public Bodies (OPLs).

## Corruption in the public sector

Indicator	Base data	Latest data	Variation
Corruption perception (score 0 - 100) (INTERNATIONAL TRANSPARENCY)	<b>28</b> (2018)	<b>31</b> (2023)	<b>3</b>
Corruption Perception Ranking (180 countries) (INTERNATIONAL TRANSPARENCY)	<b>138</b> (2018)	<b>126</b> (2023)	<b>12</b>
Corruption prevalence rate per 100,000 inhabitants (ENCIG, INEGI) <sup>10</sup>	<b>14,635</b> (2017)	<b>13,966</b> (2023)	<b>-4.6%</b>
Cost as a result of corruption (million pesos) (ENCIG, INEGI)	<b>7,217.8</b> (2017)	<b>11,910.6</b> (2023)	<b>65%</b>
Anti-corruption capacity index (score 0 - 10) (CONTROL RISKS)	<b>4.65</b> (2019)	<b>3.87</b> (2024)	<b>-0.78</b>

## Happiness or subjective well-being

Indicator	Base data	Latest data	Variation
<i>World Happiness Report</i> ranking (156 countries in 2018 and 143 countries in 2024) (UN)	<b>24</b> (2018)	<b>25</b> (2024)	<b>-1</b>
<i>World Happiness Report</i> Index (score 0 - 10) (UN)	<b>6.49</b> (2018)	<b>6.68</b> (2024)	<b>0.19</b>
Mood balance of the adult population (score - 10 to 10)(INEGI)	<b>6.3</b> (Oct 2018)	<b>6.2</b> (Jul 2024)	<b>-0.1</b>
Social Humor - The country is heading in the right direction (IPSOS)	<b>26%</b> (Nov 2018)	<b>58%</b> (Jul 24)	<b>32 pp</b>

**Note:** Prepared by the authors with data from the sources cited in each indicator.

<sup>10</sup> National Survey on Government Quality and Impact (ENCIG). Rate of victims of acts of corruption in at least one of the procedures carried out per 100 thousand inhabitants.

# 4 SECURITY, JUSTICE AND HUMAN RIGHTS

## High-impact crime rate per 100,000 inhabitants, (January-August)<sup>11</sup>

Indicator	Base data	Latest data	Variation
Intentional homicide (SESNSP)	<b>16.8</b> (2018)	<b>12.9</b> (2024)	<b>-23.2%</b>
Extortion (SESNSP)	<b>3.8</b> (2018)	<b>5.2</b> (2024)	<b>36.8%</b>
Drug dealing (SESNSP)	<b>33.5</b> (2018)	<b>47.0</b> (2024)	<b>40.3%</b>
Total robberies (SESNSP)	<b>474.2</b> (2018)	<b>274.0</b> (2024)	<b>-42.2%</b>

## Political violence

Indicator	Base data	Latest data	Variation
Number of victims registered by process electoral (EOTELEKT AND INTEGRALIA)	<b>382</b> (2017 - 2018)	<b>889</b> (2023- 2024)	<b>132.7%</b>

## Perception of insecurity

Indicator	Base data	Latest data	Variation
Population 18 years of age and older who consider their city unsafe (INEGI)	<b>75.9%</b> (2T 2018)	<b>59.4%</b> (2T 2024)	<b>-16.5 pp</b>

<sup>11</sup> Research folders reported by SESNSP and CONAPO population projections.

## Impunity<sup>12</sup>

Indicator	Base data	Latest data	Variation
State impunity index (MEXICO EVALUATES)	<b>92.4%</b> (2019)	<b>96.3%</b> (2022)	<b>3.9 pp</b>
Black figure (INEGI)	<b>93.2%</b> (2018)	<b>92.9%</b> (2024)	<b>-0.3 pp</b>

## Rule of law

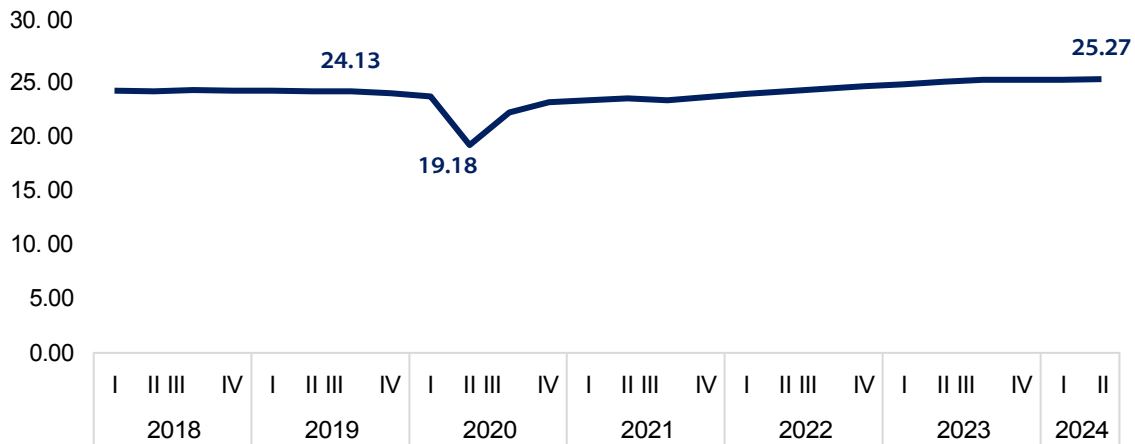
Indicator	Base data	Latest data	Variation
'World Justice Project Rule of Law Index' (score 0 - 1)	<b>0.45</b> (2018)	<b>0.42</b> (2023)	<b>-0.03</b>
World Justice Project Rule of Law ranking (113 countries in 2018 and 142 countries in 2023)	<b>92</b> (2018)	<b>116</b> (2023)	<b>-24</b>

**Note:** Prepared by the authors with data from the sources cited in each indicator.

<sup>12</sup>Both indexes range from 0 to 100, where 100 is greater impunity or black figure, respectively.

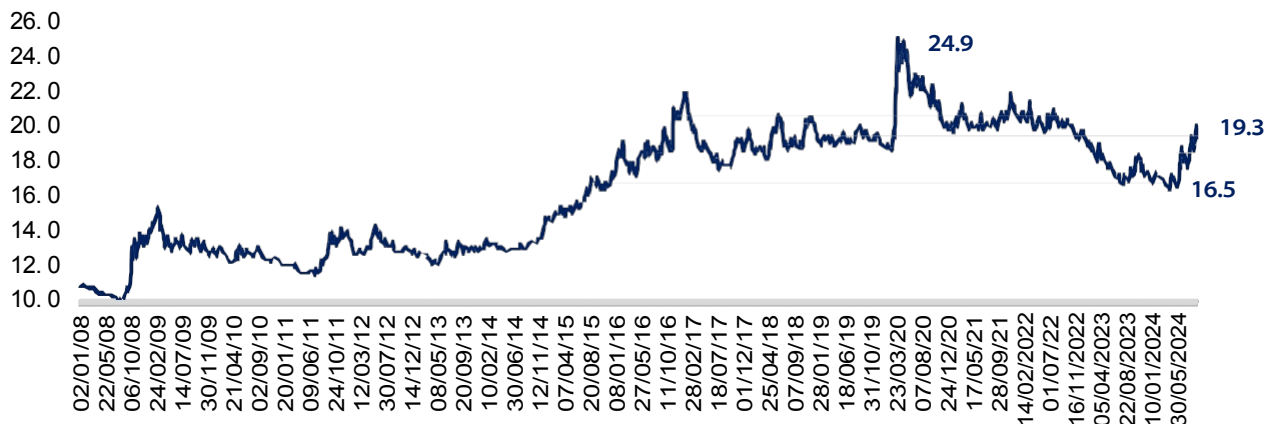
# 5 ANNEX GRAPHIC MATERIAL

Graph 1. **GDP, seasonally adjusted series**  
(billions of pesos of 2018)



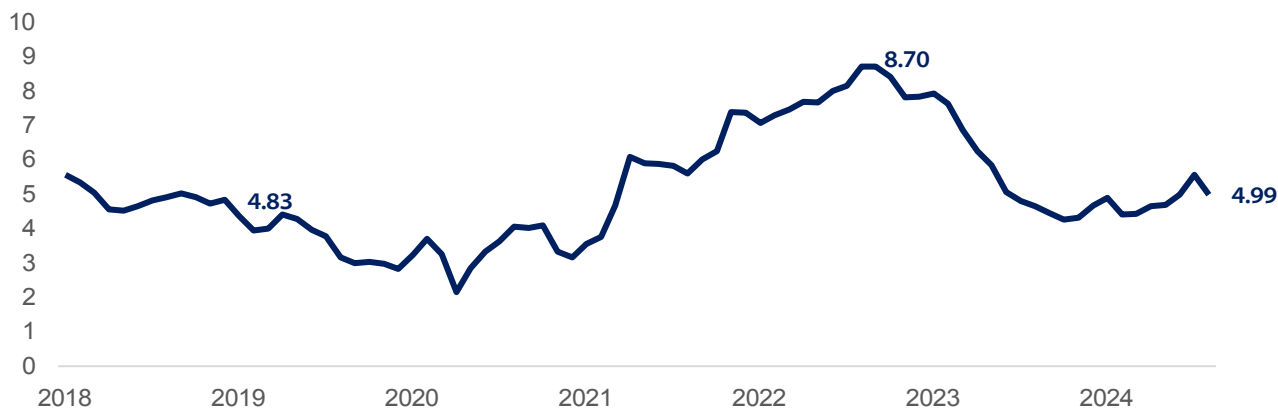
Source: Prepared by the authors with data from Inegi and SHCP.

Graph 2. **Exchange rate**  
(January 2018 to September 2024, pesos per dollar)



Source: Prepared by the authors with data from Banxico.

**Annual inflation**  
(2018 to August 2024, %)



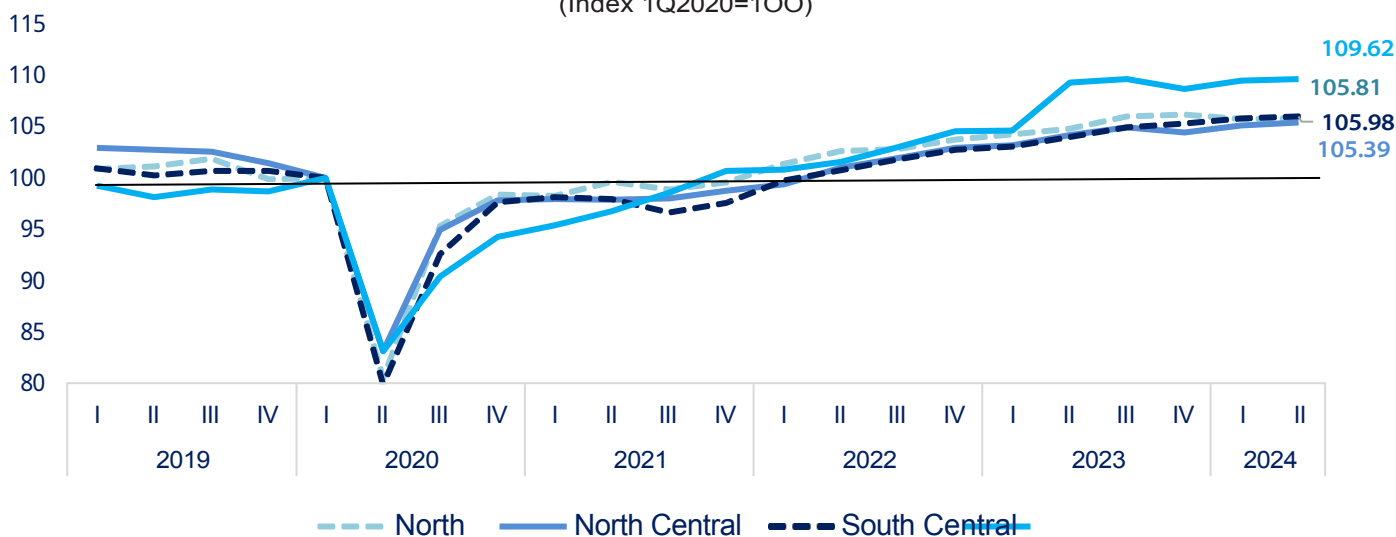
Source: Prepared by the authors with data from Inegi.

**Unemployment rate**  
(2018 to July 2024)



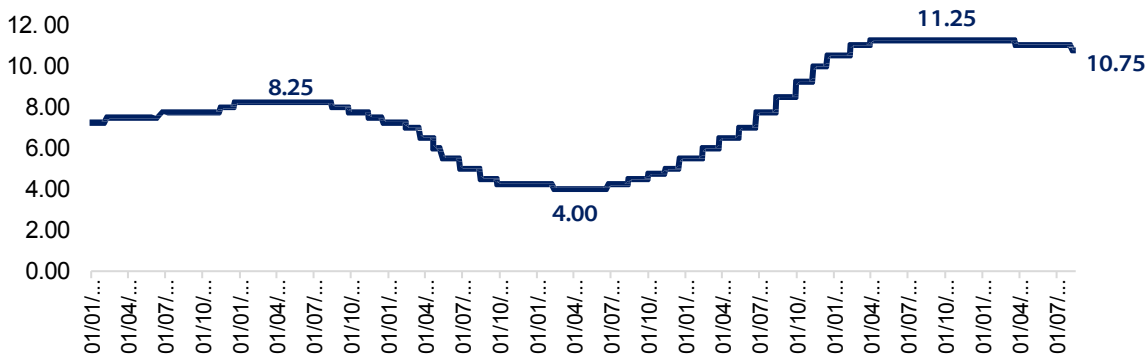
Source: Prepared by the authors with data from Inegi.

**Quarterly Indicator of Regional Economic Activity**  
(Index 1Q2020=100)



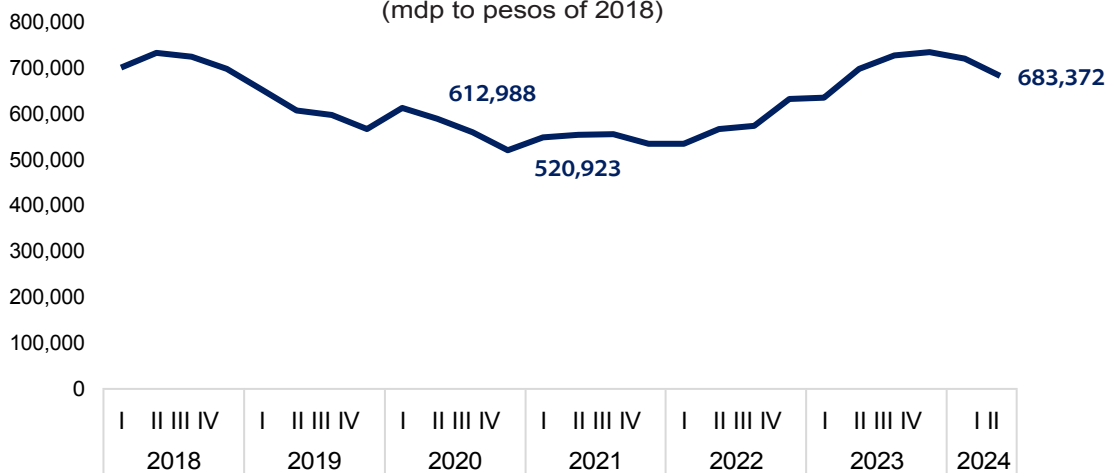
Source: Prepared by the authors with data from Banxico.

Graph 6. Banxico's Target Rate  
(annual, %)



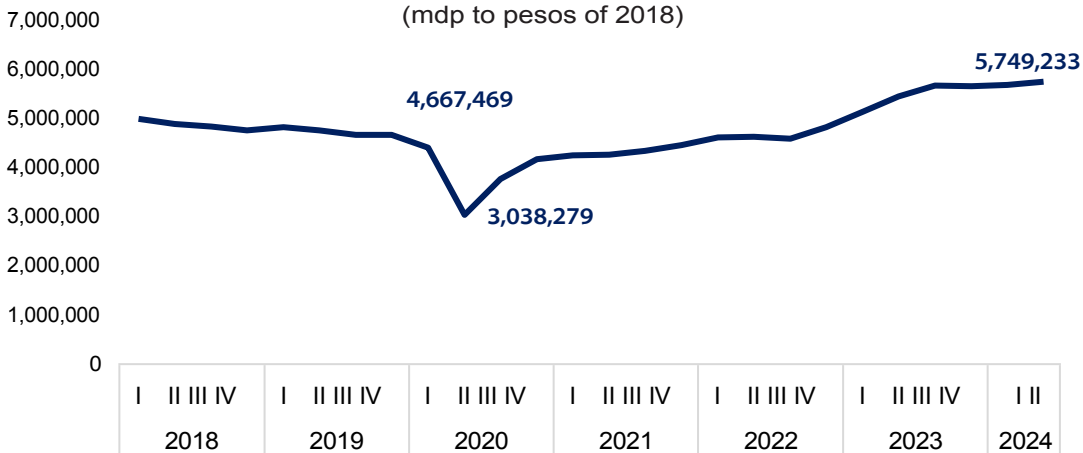
Source: Prepared by the authors with information from Banxico.

Graph 7. Public Investment  
(mdp to pesos of 2018)



Source: Prepared by the authors with information from Inegi.

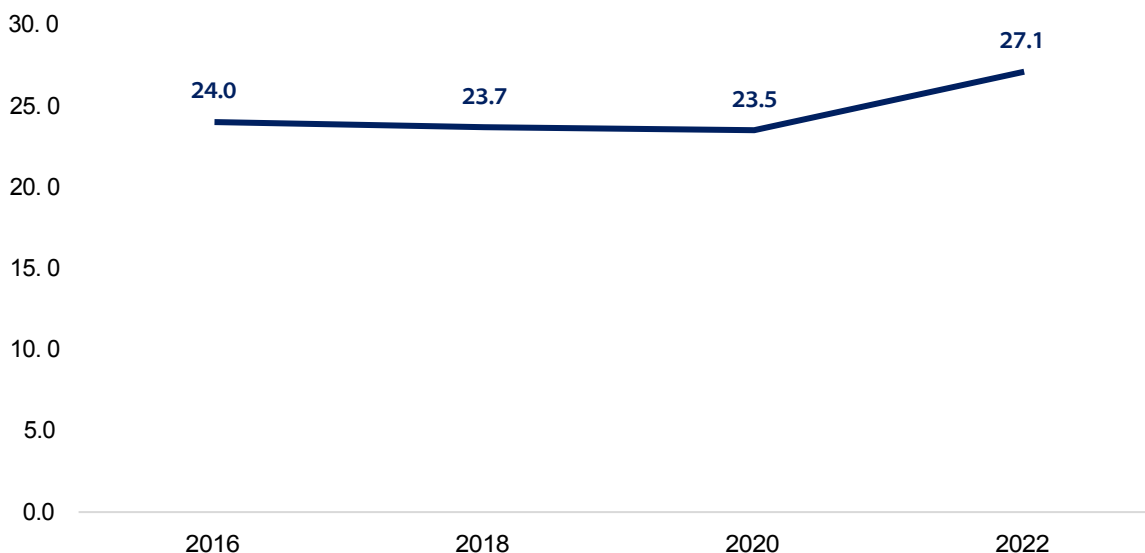
Graph 8. Private investment  
(mdp to pesos of 2018)



Source: Prepared by the authors with information from Inegi.

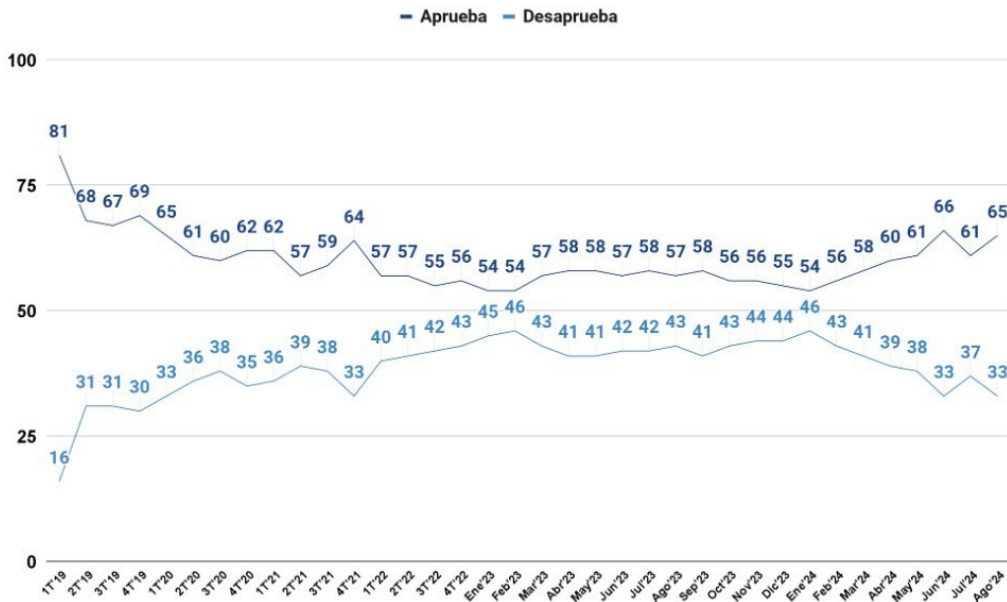


Figure 9. Non-poor and non-vulnerable population (%)



Source: Prepared by the authors with information from Coneval.

Graph 10. Approval of President Andres Manuel Lopez Obrador (% , quarterly average 2019 -2021 and monthly average 2023 - 2024)



Source: Own elaboration with information from El Financiero.

Map 1. Degree of social cohesion



Source: own elaboration with information from CONEVAL.

Table 1. Evolution of high-impact crime rates. per 100,000 population nationwide, 2018-2024 (January-August)

Crime	Rate 2018	Rate 2019	Rate 2020	Rate 2021	Rate 2022	Rate 2023	Rate 2024	Change % Change (2024 vs 2018)	Change % Change (2024 vs 2023)
Abduction	0.8	0.7	0.5	0.3	0.3	0.2	0.2	<b>-75.0%</b>	<b>0.0%</b>
Intentional homicide	16.8	15.5	15.3	14.9	13.4	13.0	12.9	<b>-23.2%</b>	<b>-0.8%</b>
Femicide	0.5	0.5	0.5	0.5	0.5	0.4	0.4	<b>-20.0%</b>	<b>0.0%</b>
Drug dealing	33.5	36.7	40.0	43.2	44.9	46.2	47.0	<b>40.3%</b>	<b>1.7%</b>
Robbery of carrier	7.4	6.3	5.0	4.4	4.4	4.8	4.0	<b>-45.9%</b>	<b>-16.6%</b>
Business robbery	65.3	63.7	49.9	44.4	43.4	39.4	37.5	<b>-42.6%</b>	<b>-4.8%</b>
Vehicle theft	125.2	101.0	77.1	71.0	70.2	69.2	68.0	<b>-45.7%</b>	<b>-1.7%</b>
Extortion	3.8	4.7	4.2	4.4	5.5	5.4	5.2	<b>36.8%</b>	<b>-3.7%</b>

Source: Prepared by the authors with data from the Executive Secretariat of the National Public Security System (SESNSP) and CONAPO.

## Report coordinators

Marina Reyes

Carlos Rubio

## Collaborators

Carlos Ramírez

Daniel García

Daniela Salgado

Karla Suárez

Luis Carlos

Ugalde Sergio

Baca

Yair Mendoza



We are a political risk, public affairs and strategic planning consulting firm. This document is for public dissemination. For more information about our specialized services for companies and governments, please contact Marina Reyes, Manager of Political Risk, at [marina.reyes@integralia.com.mx](mailto:marina.reyes@integralia.com.mx).